



ANNAVISION

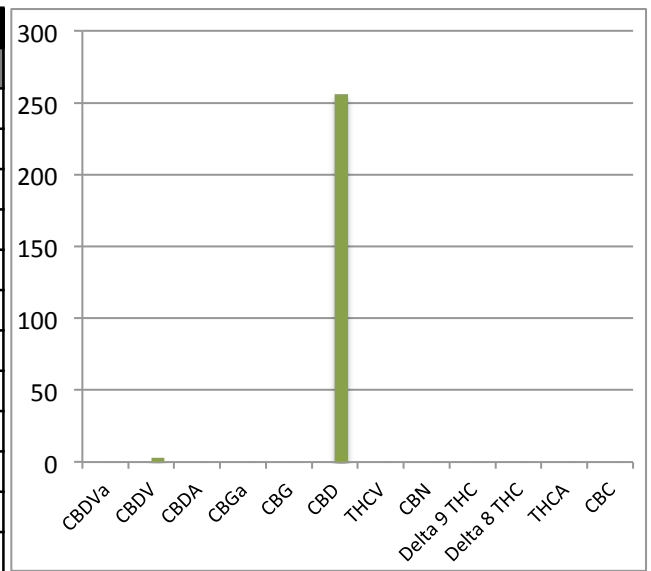
INSIDE YOUR PRODUCT WITH COMPLETE ACCURACY

CERTIFICATE OF ANALYSIS

CUSTOMER DETAILS	
COMPANY NAME	Inari Health, c/o Mirage Distribution
COMPANY ADDRESS	Unit 18, 21 Wadsworth Road, Perivale UB6 7LQ
TEST TYPE	Combined Cannabinoids
PRODUCT NAME	2500mg Peppermint MCT
SAMPLE SIZE	10ml

METHOD INFORMATION	
INSTRUMENT ID	PI-FC-10C17.01 (HPLC-UV)
SAMPLE TYPE	Final Product MCT
ID	PVOOI
SAMPLE BATCH	506192500
COLUMN ID	PVC002
PV SAMPLE ID	SK0012-1
SAMPLE RECEIVED	05/05/19

RESULTS		
PARAMETER	% W/W	MG/G
CBDVa	0.001	0.01
CBDV	0.295	2.95
CBDA	0.001	0.01
CBGa	0.001	0.01
CBG	0.004	0.04
CBD	25.611	256.1
THCV	0.001	0.01
CBN	0.002	0.02
Delta 9 THC	0.001	0.01
Delta 8 THC	0.001	0.01
THCA	0.001	0.01
CBC	0.004	0.04



FINAL PRODUCT STATEMENT

The specific gravity of 1ml equals 0.985g, which when combined with all the ingredients results in a CBD Content of 2522.7mg per 10ml.

AUTHORISED BY	TITLE	DATE	SIGNED
Brett Heaps	Director	05/06/19	<i>B. Heaps</i>

This batch has been tested by an external testing laboratory which is accredited in accordance with the recognised International Standard ISO/IEC 17025:2005. The reproduction in total or in part of this document is not allowed without the authorisation of Cannavision. The results are limited to the sample analysed and are not applicable to the entire batch.

